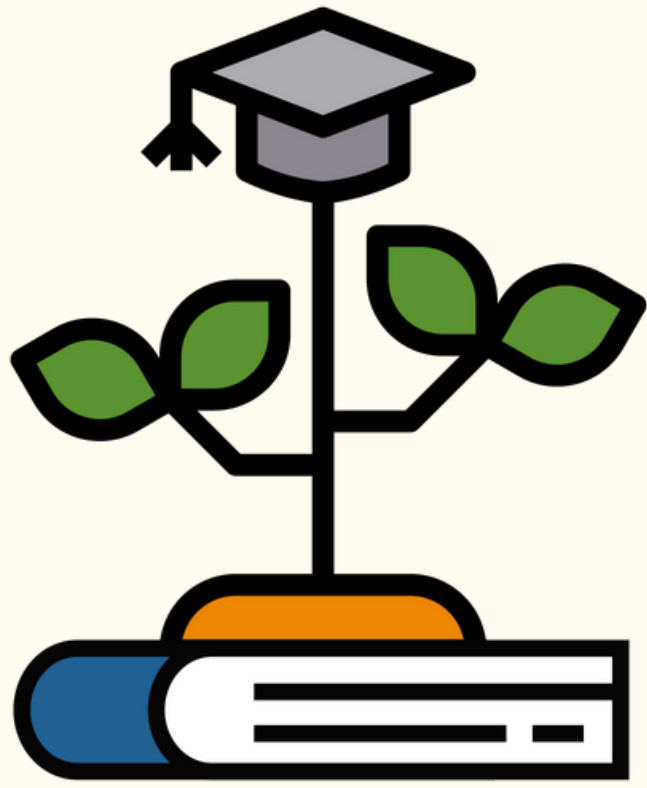


# **iLEAD** **by being a/an...**



**Lifelong Learner**

*I am a self-directed learner, focused on personal growth and development.*

*I seek to understand and appreciate what others are thinking, feeling, or experiencing.*



**Empathetic Citizen**



**Authentic Individual**

*I am true to myself, my personality, values, beliefs, and principles.*

*I am a creative, imaginative individual who explores original ideas, takes risks, and develops innovative solutions that I share with others.*



**Design Thinker**